

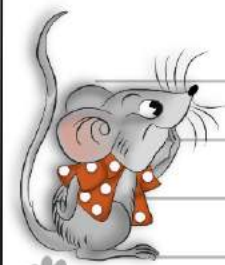
TRAVELMAUS REISETAGEBUCH

©TRAVELMAUS.DE

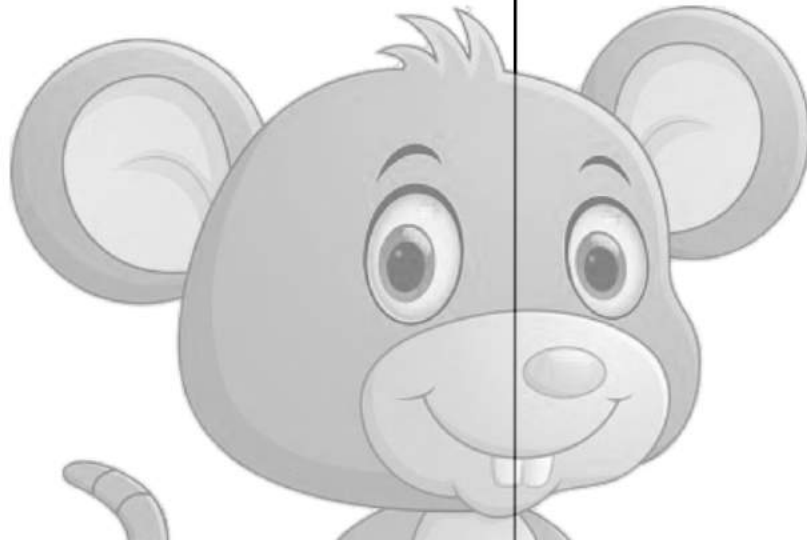


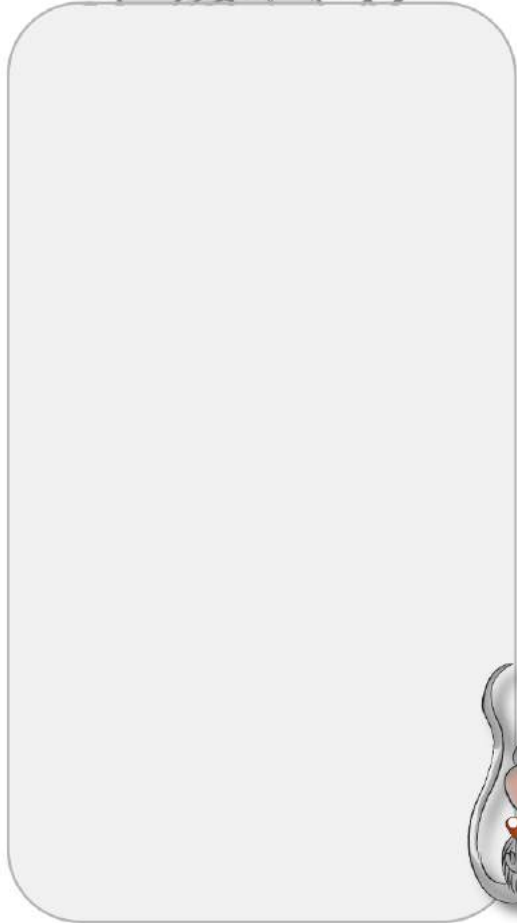


Blank writing lines on the top left side of the page.

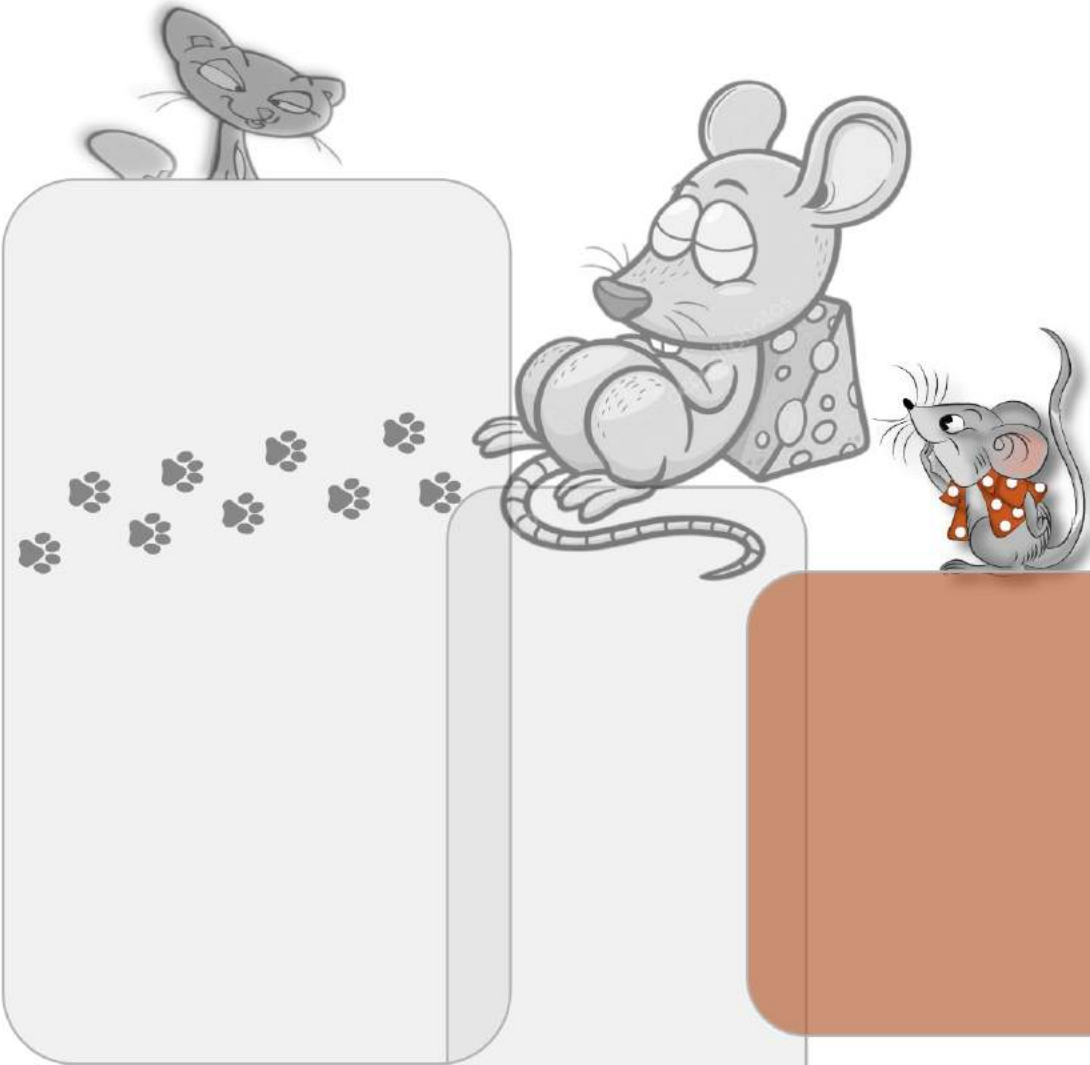


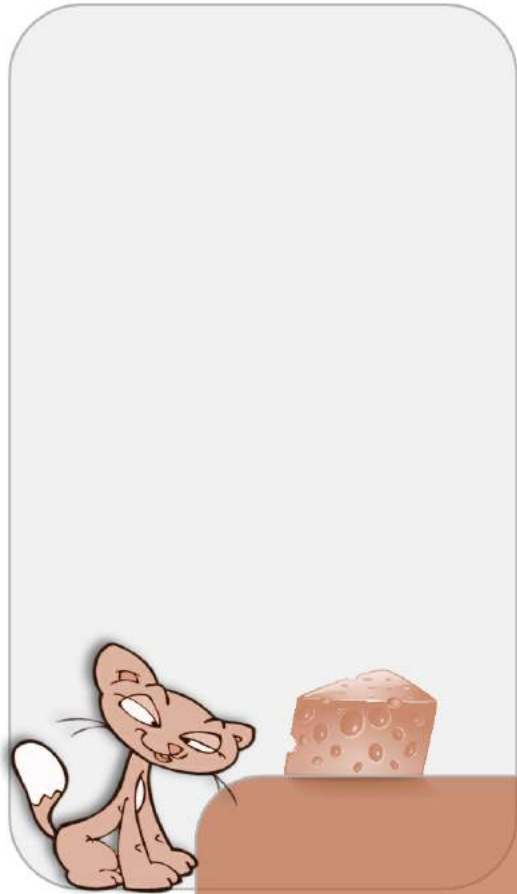
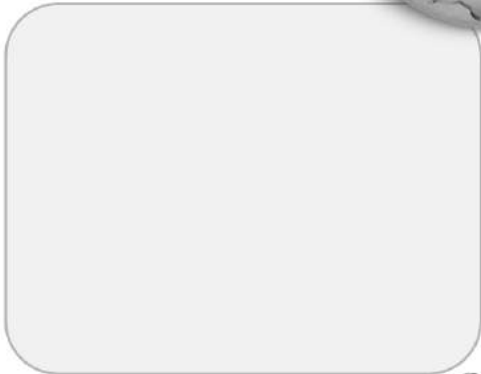
Blank writing lines on the top right side of the page.



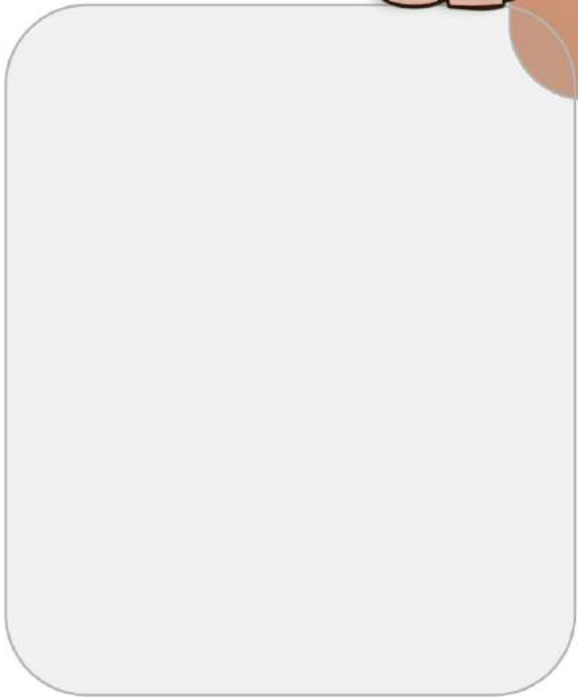








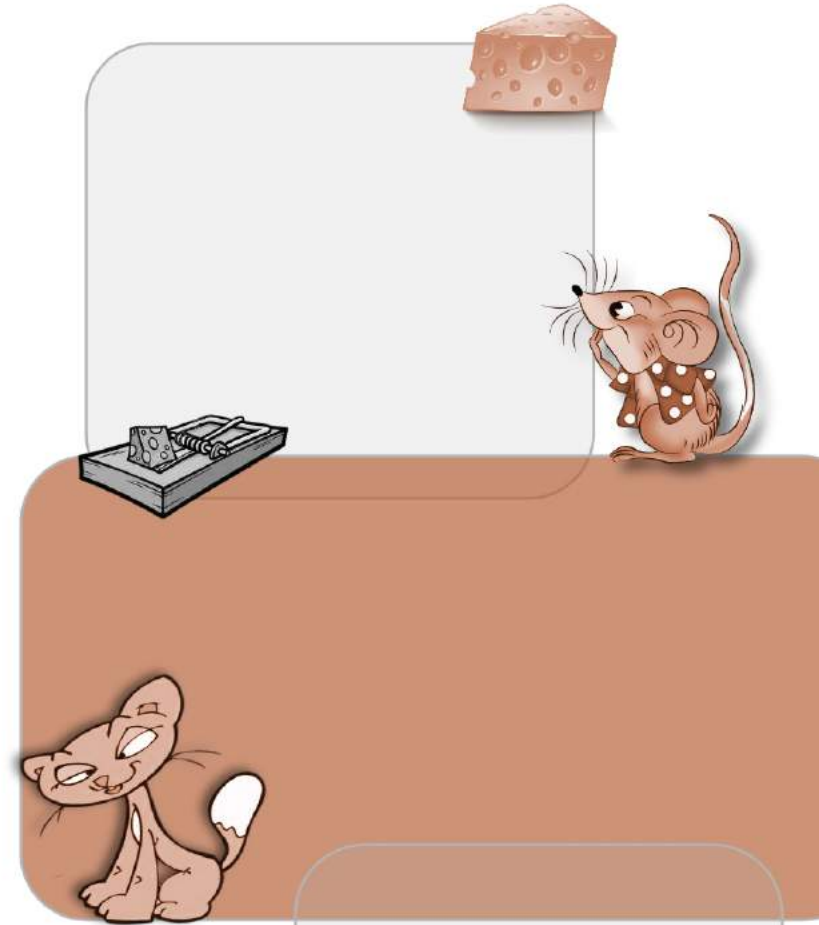




Four horizontal lines for writing.

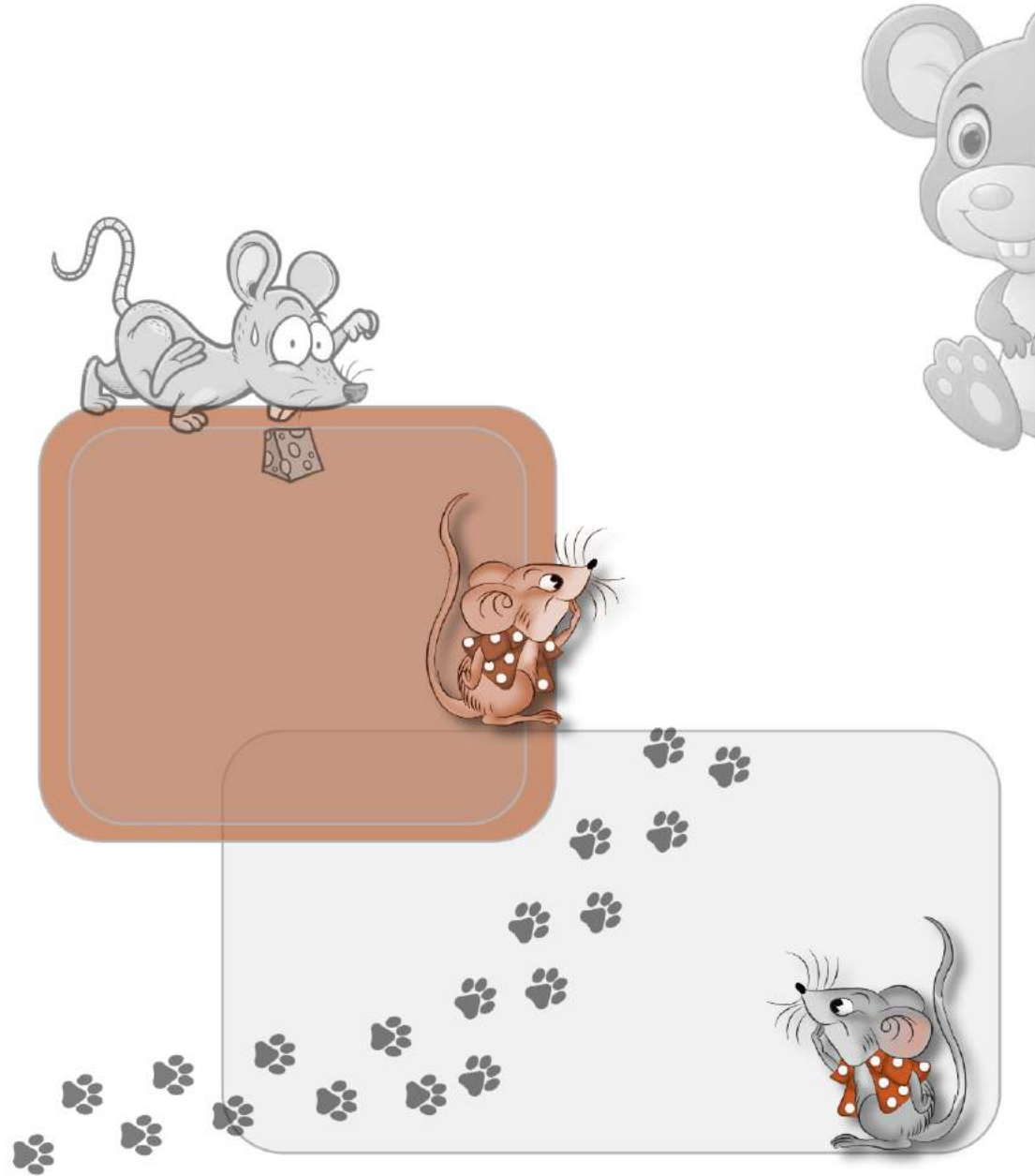


Four horizontal lines for writing.

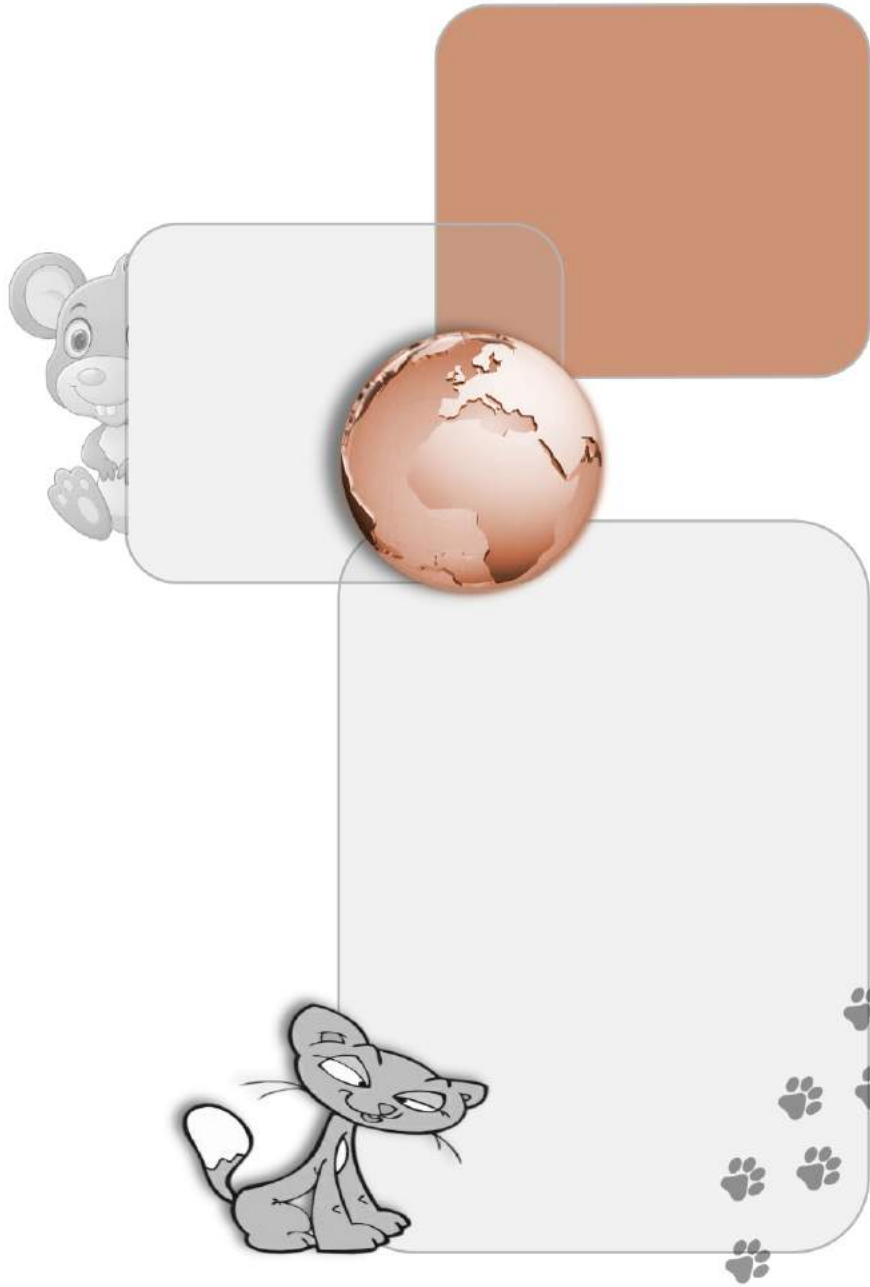


A large rounded rectangular area for writing.

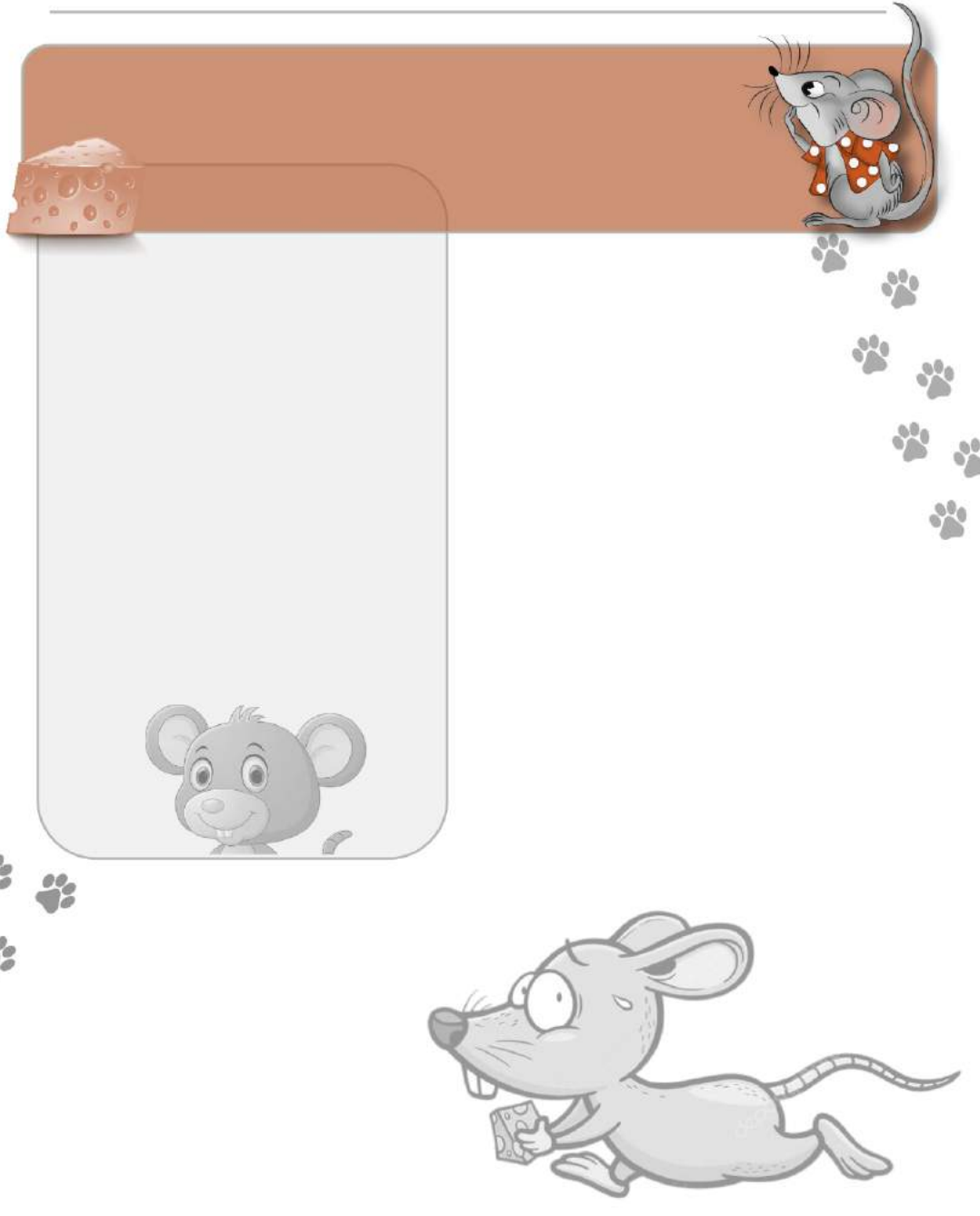




Four horizontal lines for writing at the top of the left page.



Four horizontal lines for writing at the top of the right page.





Three horizontal lines for writing.

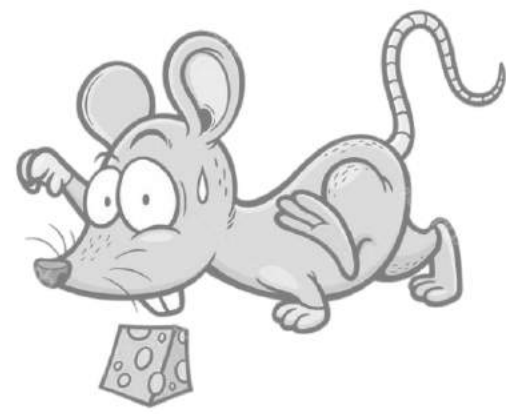
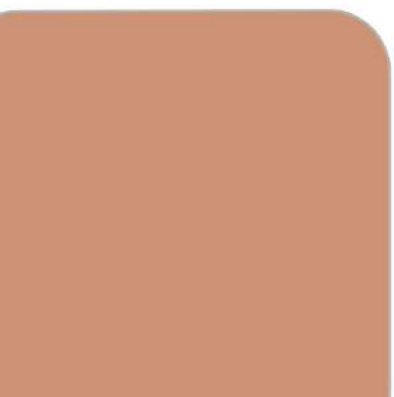
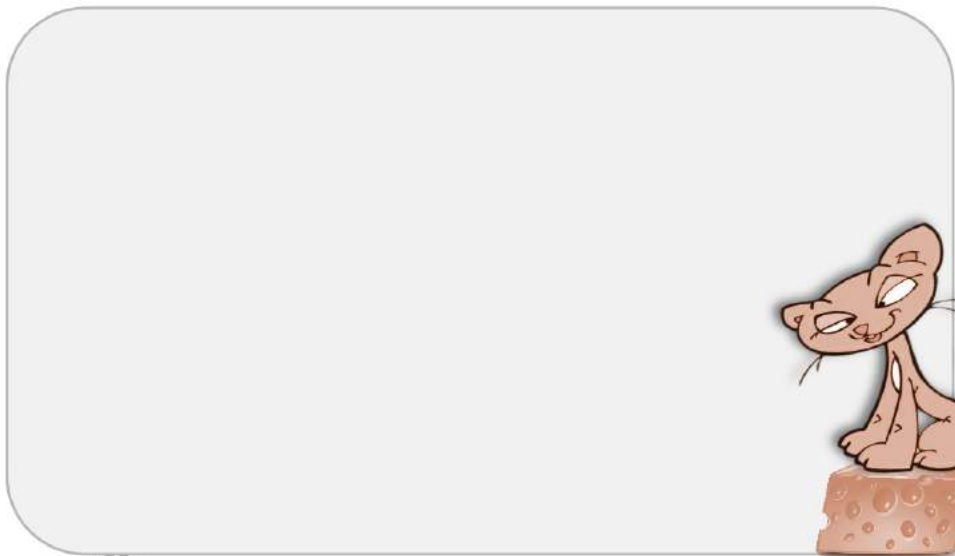


Three horizontal lines for writing.

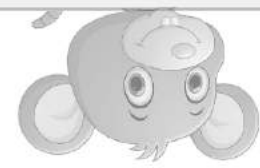
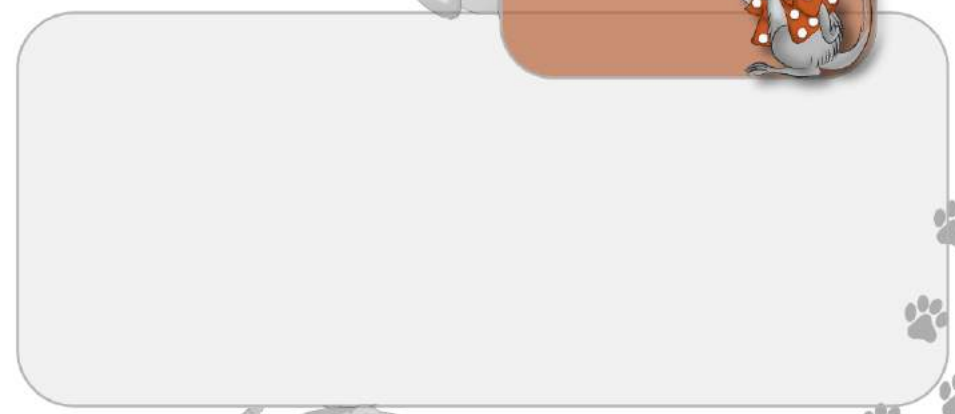




Four horizontal lines for writing.



Four horizontal lines for writing.

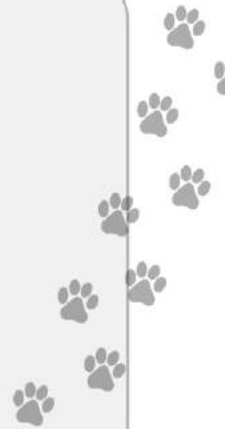
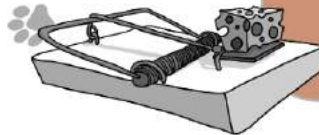






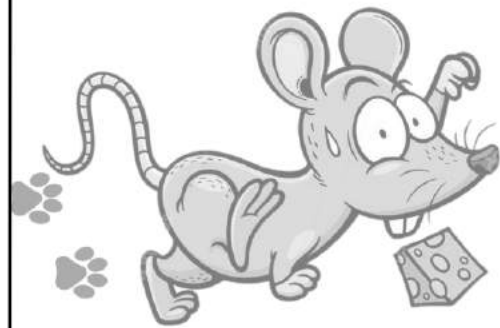
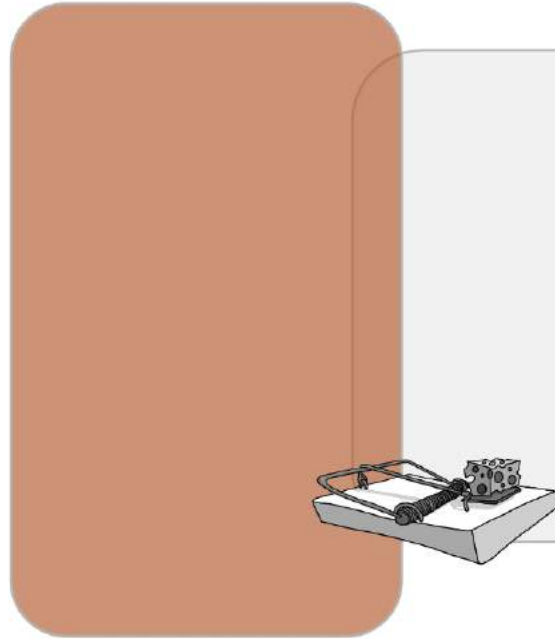








Four horizontal lines for writing, located at the top of the right page.



Four horizontal lines for writing, located at the top of the left page.



Four horizontal lines for writing, located at the top of the right page.

